

**kapture**<sup>®</sup>

KPT  
**860**



**USER MANUAL**

YOUR EYEWITNESS ON THE ROAD™

# CONTENTS

<b>1.0 PRODUCT INFORMATION .....</b>	<b>06</b>
1.2 INTRODUCTION .....	06
1.3 FEATURES.....	06
1.4 PACKAGE CONTENTS.....	07
1.5 PRODUCT OVERVIEW.....	07
<b>2.0 GETTING STARTED.....</b>	<b>08</b>
2.2 INSERTING A MEMORY CARD.....	08
2.3 REMOVING A MEMORY CARD.....	08
2.4 MOUNTING YOUR KPT-860.....	09
2.5 INSTALLING YOUR KPT-860 MAGNETIC MOUNT .....	9-10
2.6 CONNECTING POWER TO YOUR KPT-860 .....	11
2.7 POWERING UP YOUR KPT-860.....	11
2.8 SMARTPHONE CONNECTION .....	11
2.9 DOWNLOADING THE APP.....	11
2.10 WIFI CONNECTION .....	12

<b>3.0 USING THE APP</b> .....	<b>13</b>
3.2 INTRODUCTION .....	13
3.3 CAMERA SETUP .....	13
3.4 CAMERA .....	14
3.5 VIEWING YOUR KP-860'S LIVESTREAM.....	15
3.6 TRANSFERING CONTENT TO YOUR SMART DEVICE .....	15-17
3.7 SHARING CONTENT TO SOCIAL MEDIA .....	18
3.7 SETTINGS .....	19-20
<b>4.0 FEATURES &amp; SPECIFICATION</b> .....	<b>21</b>
4.2 FEATURES.....	21
4.3 SPECIFICATION.....	22
<b>5.0 WARRANTY INFORMATION</b> .....	<b>23</b>
5.2 ABOUT THIS GUIDE .....	23
5.3 WARRANTY TERMS AND CONDITIONS .....	23

## CAUTION

- Ensure you are using your Car Dash Cam within your countries' road laws. Please make sure you are familiar with your local road legislation before use.
- Avoid leaving your Car Dash Cam in direct sunlight for extended periods of time in an unventilated space.
- Please set time and date before you use this device to record.
- The notifications given by the Car Dash Cam are suggestions only, please drive to the actual conditions.
- The results of GPS positioning are only for reference. The Car Dash Cam will lose GPS positioning abilities when signal is blocked (e.g. driving through tunnels, enclosed car parks).
- GPS positioning accuracy may vary depending on weather and surroundings such as dense cities, tunnels, or forests. GPS satellite signals cannot pass through most solid materials. Tinted windows may also affect the GPS signal.
- The values displayed in this system, such as speed, position, and the distance warning, may be affected by the surrounding environment.
- The system is to be used only for non-commercial use, within the limits permitted by the relevant laws.
- Avoid using the Car Dash Cam in the vicinity of any devices that emit radio interference (e.g. Microwave Ovens).
- It is considered normal operation for the Car Dash Cam to get warm during use.

## **BATTERY WARNING**

- Always charge the Car Dash Cam using the provided charger. Improper charging of the Car Dash Cam may result in failure of the internal battery.
- Never dismantle the Car Dash Cam or expose the internal battery.
- Do not dispose of the Car Dash Cam in fire.
- Dispose of the Car Dash Cam observing local regulations being mindful of the internal battery.
- Do not attempt to replace or expose the internal battery.

## **NOTES ON INSTALLATION**

- It is advised that the Car Dash Cam is installed near the rear view mirror, at the top centre of the windshield for optimal operation.
- Make sure that the lens is within the range of the windscreen wiper to ensure a clear view when it rains.
- Do not touch the lens with your fingers. Finger prints left on the lens will result in unclear videos or photos. If photos or videos are blurred, please clean the lens gently with a microfibre cloth.
- Do not install the device on a tinted window. Doing so may damage the tint film and restrict the Car Dash Cam's GPS signal.
- Make sure that the installation position does not hinder or block the field of view or GPS signal.
- Only use the included charging cable to power the Car Dash Cam.

# PRODUCT INFORMATION

## 1.2 INTRODUCTION

Thank you for purchasing a Kapture Dash Cam. Please read through instructions before attempting to install or use this product.

For latest manual and product updates please visit our website at [www.kapturecam.com.au](http://www.kapturecam.com.au) or [www.kapturecam.co.nz](http://www.kapturecam.co.nz).

## 1.3 FEATURES

- Recording Full HD 1080P footage at 30 frames per second
- Social media sharing
- Built in GPS
- WiFi Smart Device Connectivity
- 140° field of view
- Snapshot Remote
- Automatic Emergency recording and collision detection
- App allowing video transfer and playback alongside GPS tracking

## 1.4 PACKAGE CONTENTS



**KPT-860  
Dash Camera**



**3M Suction  
Disc**



**USB Power  
Cable**



**Magnetic  
Mount**

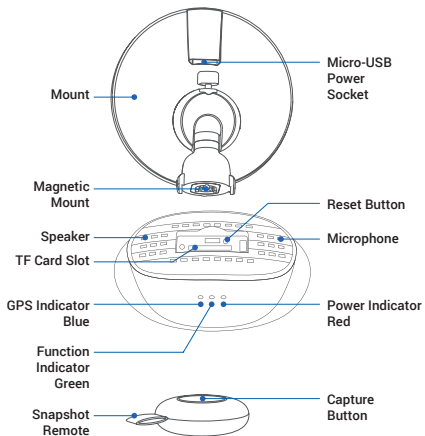


**Snapshot  
Remote**



**USB Power  
Adapter**

## 1.5 PRODUCT OVERVIEW



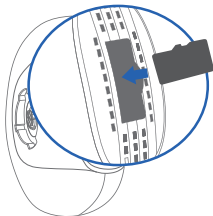
# GETTING STARTED

## 2.2 INSERTING A MEMORY CARD

Ensure that your KPT-860 is powered off. With the lens facing away from you remove the protective cap on the rear of the camera using your fingernail to pry off the cap from the top. Insert your Micro SD card (not included) into the slot on the rear of the camera with the text face of the Micro SD card facing up. Use your fingernail to press the card into the slot until a click is heard and replace the protective cap.

### NOTE:

1. Do not insert or remove a Micro SD card while your **KPT-860** is powered up. This may damage your Micro SD card.
2. Please use class 10 or higher rated Micro SD cards, 16GB or above (up to 128GB).
3. Please format the Micro SD card before initial use (in FAT 32 format if you are using a computer to format your Micro SD card).



## 2.3 REMOVING A MEMORY CARD

Ensure that your KPT-860 is powered off. Using your fingernail press the SD card until a click is heard and release. The card should eject from the slot.

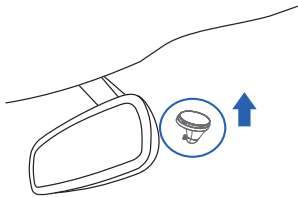


## 2.4 MOUNTING YOUR KPT-860

Please read through all mounting instructions before attempting to install the KPT-860. It is recommended that you install the KPT-860 behind your rear view mirror. Once you have mounted your camera using your preferred method it is recommended that you run the power cable around your windscreen under your vehicles interior trim using the included tool and cable clips. If your vehicle has side curtain air bags, please be very careful when running cables along your vehicles windows. Please ensure that you do not run the cables past any of these air bags as this can prevent the air bags from deploying in an emergency. When mounting the Snapshot Button, please avoid attaching this to any of your vehicles airbags.

## 2.5 INSTALLING YOUR KPT-860 MAGNETIC MOUNT

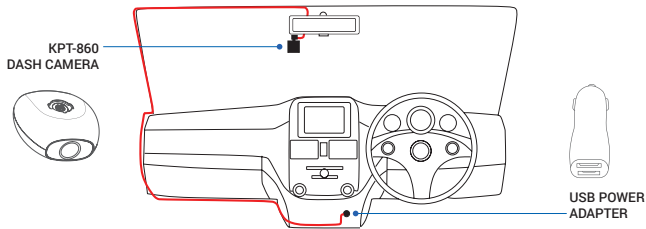
1. To install the Magnetic Mount, ensure the 3M mounting plate is securely attached to the magnetic mount.
2. Clean windshield with an Alcohol Wipe, making sure there is no dust, moisture, or oil on the desired mounting point of the windscreen.
3. Remove the protective film on the adhesive pad and place the Magnetic Mount in the desired position on your windscreen.
4. Firmly press and hold the Magnetic Mount against your windscreen for 60 seconds to ensure that the adhesive sets.



5. Once the adhesive has set use the magnetic the KPT-860 dash cam into place.
6. Angle the camera on the mount correctly and when the position is correct tighten the ball joint by turning the lock peg clockwise.

## 2.6 CONNECTING POWER TO YOUR KPT-860

The KPT-860 is designed to run of the 12V DC power provided from your vehicle. To connect your KPT-860 plug the Dual Socket Car Charger into your vehicles power socket (cigarette lighter), and connect the USB cable to the 2.1A socket (The 1A socket can be used to charge any of your 1A USB devices capable of taking a 1A charge). Connect the USB micro end of the cable into the Magnetic Mount.



## 2.7 POWERING UP YOUR KPT-860

The KPT-860 will power up and begin recording automatically once it has been correctly installed, and you start your vehicle. The KPT-860 will also record for 20 seconds after you stop your vehicle before shutting down.

### NOTE:

The battery in the KPT-860 is designed to hold settings and dates and is not designed for long term use. Please ensure that the KPT-860 is installed correctly, and is using your vehicles power when recording.

## 2.8 SMARTPHONE CONNECTION

Connecting your smartphone to your KPT-860 allows you to transfer video files to your Smartphone and view your videos alongside your GPS footage. The KPT-860 App requires at least 500MB of free storage on your smart device to operate correctly.

## 2.9 DOWNLOADING THE APP

To wirelessly connect your smartphone to the KPT-860 you will need to download the Kapture KPT-860 App This can be found by searching "KPT-860" on the Apple App Store on iPhones or the Google Play Store on Samsung Galaxy Android smartphones.



Kapture KPT-860 App can be downloaded from the Apple App Store and Google Play Store. Apple, the Apple logo, and iPhone are trademarks of Apple Inc., registered in the U.S. and other countries. Google Play and the Google Play logo are trademarks of Google Inc. Industries. Compatible with Micro SD cards minimum 16GB, up to 128GB capacity. Class 6 or above (Class 10 recommended). Micro SD card not included.

## 2.10 WIFI CONNECTION

To wirelessly connect your smartphone to the KPT-860 you will need to download the Kapture KPT-860 App This can be found by searching "KPT-860" on the Apple App Store on iPhones or the Google Play Store on Samsung Galaxy Android smartphones.

1. To connect to your KPT-860's WiFi connection, connect the KPT-860 to your vehicles power using the included cable and power adapter.
2. Wait for 20 seconds for the KPT-860 to start up and the WiFi connection to start transmitting.
3. Go into your smartphones WiFi settings and connect to the KPT-860 with the details below.  
**Connection** KPT860  
**Password** 1234567890
4. Once connected, open the KPT-860 App.

# USING THE APP

## 3.2 INTRODUCTION

Once you open the KPT-860 App the front page will give you access to your connected camera, albums and profile.

## 3.3 CAMERA SETUP

In some cases you may need to add your KPT-860 to the App so that it is recognised. To add your camera ensure that you are connected to the KPT-860s WiFi connection, open the camera screen in the KPT-860 app and tap the + button at the top right of the screen. This will show a list of available cameras. Select your KPT-860 from this list and proceed. Your camera will now be linked to your KPT-860 App.

### **NOTE:**

If you are using an Android device and you are having difficulty adding your camera, or experiencing connectivity issues you may need to switch off the intelligent network switching setting.

### 3.4 CAMERA

This screen is the opening screen of the KPT-860 App. The camera screen is used to display your current speed, camera feed and videos stored on the Micro SD Card installed in the connected KPT-860.

#### 1. View Finder

View the current stream from your KPT-860 and manage settings.

#### 2. File List

Your recorded snapshots will appear here.

#### 3. Dashboard

Displays your current driving statistics.

#### 4. Camera

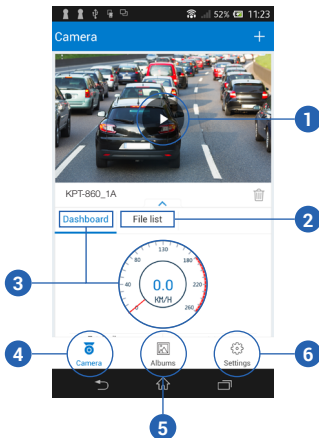
Brings you back to the camera page.

#### 5. Album

Displays all videos and snapshots saved to your smart device.

#### 6. Settings

Edits app and camera settings.



### 3.5 VIEWING YOUR KPT-860'S LIVESTREAM

To view your camera's live stream, follow the instructions below.

1. Ensure that your smart device is connected to the KPT-860's WiFi connection.
2. Enter the camera screen by tapping the 'camera' button (*item 4, page 14*).
3. In the Camera screen, tap the play button that appears on top of the page.
4. The camera's live stream will now be displayed on screen.

**NOTE:**

1. Your KPT-860 must be connected to your smart device via WiFi to access the live view.
2. The KPT-860 must be connected to power to maintain a WiFi connection.
3. Do not attempt to use the app or connect your smart device while operating your vehicle.
4. WiFi Assist functionality and sufficient cellular function is required of your smart device to track your GPS data alongside your footage on the app.
5. If your Smart device does not have WiFi assist functionality you will need to download your offline map for your area before you will be able to track your GPS data alongside your footage.
6. Your cellular data rates will apply to any data used by the KPT-860 app while using your cellular network.

### 3.6 TRANSFERRING CONTENT TO YOUR SMART DEVICE

Transferring video allows you to play back and view photos and videos while you are outside of range of the KPT-860. To transfer videos, please follow the instructions below.

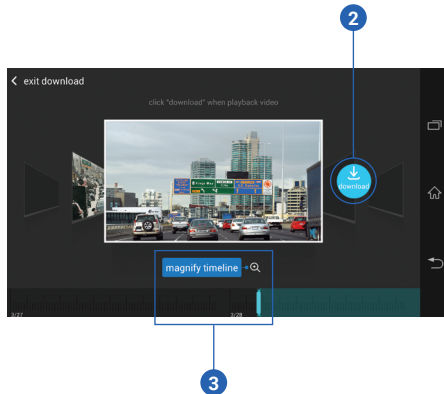
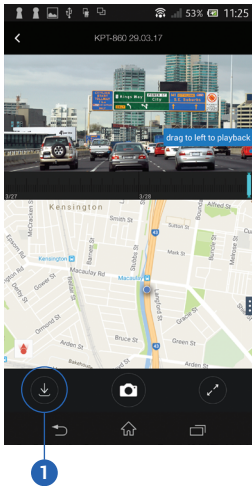
1. Ensure that your smart device is connected to the KPT-860's WiFi connection.
2. Enter the camera screen by tapping the 'camera' button (*item 4, page 14*).
3. In the Camera screen, tap the play button that appears on top of the page (*item 1, page 14*).

4. In the View Finder screen press the transfer button in the corner (*item 1, page 17*).
5. Select either "Download Image Files" or "Download Video Files" depending on which type of files you want to transfer.
6. Select your required media using the slider at the bottom (*item 2, page 17*) and press the play button on the required file.
7. When the file loads up, tap the "Start Download" button (*item 3, page 17*).
8. Your file will now start downloading.
9. To cut the clip short, tap the "Finish Downloading" button to finish transferring. Your transferred videos can then be accessed through the Album page of the App (*item 5, page 14*).

**NOTE:**

1. Your KPT-860 must be connected to your smart device via WiFi to access the live view.
2. Your KPT-860 must be connected to power to maintain a WiFi connection.
3. Do not attempt to use the app or connect your smart device while operating your vehicle.
4. WiFi Assist functionality and sufficient cellular function is required of your smart device to track your GPS data alongside your footage on the app.
5. If your Smart device does not have WiFi assist functionality you will need to need to download your offline map for your area before you will be able to track your GPS data alongside your footage.
6. Your cellular data rates will apply to any data used by the KPT-860 app while using your cellular network.





### 3.7 SHARING CONTENT TO SOCIAL MEDIA

To share your videos on social media your smart device must be linked to your social media app. To share your videos to your chosen social media, please follow the instructions below.

1. Transfer your required video to your smart device following the instructions laid out in the section of this manual titled "Transferring Photos and Videos to your Smart Device".
2. Once you have transferred your required video to your smart device, enter the Album menu by pressing the Album button (item 5, page 15).
3. Select required video and press the upload button, which will give you your sharing options.
4. If your required social media is not an option in this sharing menu, select the photo stream option which will save the video to your smart devices photo roll.
5. Once saved to your smart devices photo roll you will be able to upload the video to your social media platform of choice either via your social media app or your photo stream app.
6. Smart device must be connected to your KPT-860 via WiFi to access video transfer.
7. The KPT-860 must be connected to power to maintain a WiFi connection.
8. Do not attempt to use the app or connect your smart device while operating your vehicle.

**NOTE:**

1. Your KPT-860 must be connected to your smart device via WiFi to access video transfer.
2. Your KPT-860 must be connected to power to maintain a WiFi connection.
3. Do not attempt to use the app or connect your smart device while operating your vehicle.
4. Please be mindful of the privacy of others when uploading videos to any public forum.

### 3.8 SETTINGS

The settings menu is used to adjust the settings of both the app and the camera.

The settings menu also gives you a snapshot of your driving behaviour.

The following settings can be edited in the following sub folders.

SETTING NAME	SETTING DESCRIPTION	LOCATION
<b>Camera Name</b>	Customise the name of your KPT-860.	Settings/Settings/Camera Settings/ Camera Name
<b>Camera Password</b>	Change your camera's WiFi password.	Settings/Settings/Camera Settings/ Camera Password
<b>Camera Volume</b>	Set the volume for the cameras audio notifications.	Settings/Settings/Camera Settings/ Camera Volume
<b>Resolution</b>	Set the recording quality of the camera.	Settings/Settings/Camera Settings/ Resolution
<b>G Sensor Sensitivity</b>	Set the sensitivity of the cameras built in G Sensor.	Settings/Settings/Camera Settings/ Advanced Settings/G-Sensor Sensitivity
<b>Language</b>	Set the language of the camera and App.	Settings/Settings/Language
<b>Device Storage Management</b>	View the storage used on your smart device.	Settings/Settings/Device Storage Management

<b>Time Format</b>	Set the format that you want the time and date displayed on the footage.	Settings/Settings/App Advanced Settings/Time Format
<b>Camera Recording With Sound</b>	Mute or unmute the microphone while recording.	Settings/Settings/Camera Settings/Video Recording With Sound
<b>Video Format</b>	Set the video format to either 16:9 or 2.4:1.	Settings/Settings/Camera Settings/Video Format
<b>Camera Storage Management</b>	View and format the storage used on the SD card inserted into your camera.	Settings/Settings/Camera Settings/Camera storage Management
<b>Camera Info</b>	Displays the camera information.	Settings/Settings/Camera Settings/Camera Info

# FEATURES & SPECIFICATION

## 4.2 FEATURES

**GPS** GPS records your current location and speed, and saves this information to your video files as it is being recorded. This data is then played back via the KPT-860 smartphone app showing your mapped location and speed at the time of recording.

**WiFi** WiFi is used to connect your KPT-860 to your smart device. Through the KPT-860 App, you can edit settings on the camera, playback videos and GPS recording, and transfer videos.

**SNAPSHOT BUTTON** The included Snapshot Remote connects to your KPT-860 and when pressed will capture an image and trigger a short video clip which will be saved.

**G-SENSOR** The built in G-Sensor detects impacts on your vehicle and saves the video that is being recorded at the time of impact to the Emergency file in the Album folder. These files then will not be saved over until they have been manually deleted. The G-sensor sensitivity can be edited via the KPT-860 App in the following location.

### 4.3 SPECIFICATIONS

<b>Resolution</b>	1080p
<b>Lens</b>	140 °
<b>Storage Media</b>	Class 10 Micro SD Card Between 16GB and 128GB
<b>Operating Temperature</b>	-20°C ~70°C
<b>Operating Power</b>	-2.1A
<b>Interface</b>	Micro-USB
<b>Battery</b>	250mAh
<b>Microphone</b>	YES
<b>Weight</b>	76g (96g with mount)
<b>Dimensions</b>	65mm x 80mm x 63mm

# WARRANTY INFORMATION

## 5.2 ABOUT THIS GUIDE

The content in this document is for information purpose and is subject to change without prior notice. We made every effort to ensure that this User Guide is accurate and complete. However, no liability is assumed for any errors and omissions that may have occurred. The manufacturer reserves the right to change the technical specifications without prior notice. For latest manual and product updates please visit our website at [www.kapturecam.com.au](http://www.kapturecam.com.au) or [www.kapturecam.co.nz](http://www.kapturecam.co.nz).

## 5.3 WARRANTY TERMS AND CONDITIONS

Our goods come with guarantees that cannot be excluded under the Australian & New Zealand Consumer Law. You are entitled to a replacement or refund for a major failure and for compensation for any other reasonably foreseeable loss or damage. You are also entitled to have the goods repaired or replaced if the goods fail to be of acceptable quality and the failure does not amount to a major failure.

This warranty is provided in addition to your rights under the Australian & New Zealand Consumer Law. Directed Electronics warrants that this product is free from defects in material and workmanship for a period of 12 months from the date of purchase or for the period stated on the packaging. This warranty is only valid where you have used the product in accordance with any recommendations or instructions provided by Directed Electronics.

This warranty excludes defects resulting from alterations of the product, accident, misuse, abuse or neglect. In order to claim the warranty, you must return the product to the retailer from which it was purchased or if that retailer is part of a National network, a store within that chain, along with satisfactory proof of purchase. The retailer will then return the goods to Directed Electronics. Directed Electronics will repair, replace or refurbish the product at its discretion. The retailer will contact you when the product is ready for collection. All costs involved in claiming this warranty, including the cost of the retailer sending the product to Directed Electronics, will be borne by you.

# YOUR EYEWITNESS ON THE ROAD™

Directed Electronics Address: 44 Translink Drive, Keilor Park Victoria Australia 3042

Ph: +61 03 8331 4800

Email: [service@kapturecam.com.au](mailto:service@kapturecam.com.au)



[www.kapturecam.com.au](http://www.kapturecam.com.au)  
[www.kapturecam.co.nz](http://www.kapturecam.co.nz)



**DIRECTED**  
AUSTRALIA & NZ

[www.directed.com.au](http://www.directed.com.au)  
[www.directed.co.nz](http://www.directed.co.nz)