



**KPT-850**

# DISCREET DASH CAM

1080P WITH GPS, WIFI & SUPER CAPACITOR



**USER MANUAL**

YOUR EYEWITNESS ON THE ROAD™



CAUTION .....	4
SUPER CAPACITOR WARNING .....	4
NOTES ON INSTALLATION .....	4
PRODUCT INFORMATION.....	5
<b>1 INTRODUCTION .....</b>	<b>5</b>
1.1 FEATURES .....	5
1.2 PACKAGE CONTENTS.....	5
1.3 PRODUCT OVERVIEW.....	5
1.4 LED INDICATORS .....	5
1.5 GESTURE INDUCTION AREA.....	5
1.6 GPS RECEIVER .....	6
<b>2 GETTING STARTED.....</b>	<b>6</b>
2.1 INSERTING THE MEMORY CARD.....	6
2.2 REMOVING THE MEMORY CARD.....	6
2.3 MOUNTING YOUR KPT-850 .....	6
2.4 INSTALLING YOUR KPT-850 WINDSHIELD BRACKET .....	7
2.5 INSTALLING YOUR GPS RECEIVER .....	7
2.6 CONNECTING POWER TO YOUR KPT-850 .....	7
2.7 REMOVING THE KPT-850 FROM THE MOUNT.....	7
2.8 POWERING UP THE KPT-850 .....	7-8
2.8.1 MANUALLY POWERING OFF THE KPT-850.....	8
2.9 SMARTPHONE CONNECTION.....	8
2.9.1 DOWNLOADING THE APP .....	8
2.9.2 WIFI CONNECTION.....	8
<b>3 USING THE KPT-850 APP .....</b>	<b>9</b>
3.1 LIVE VIEW SCREEN .....	9
3.2 FORMATING YOUR MEMORY CARD.....	9
3.3 ALBUM (STORED ON KPT-850).....	10
3.4 TRANSFERRING VIDEOS TO YOUR SMART DEVICE .....	10
3.5 PLAYBACK (FROM KPT-850).....	10-11
3.6 DELETING VIDEOS (FROM SMART DEVICE).....	11
<b>4 SETTINGS .....</b>	<b>11</b>
<b>5 FEATURES .....</b>	<b>12</b>
5.1 GPS .....	12
5.2 WIFI .....	12
5.3 GESTURE ACTIVATED SNAPSHOT .....	12
5.4 G-SENSOR .....	12
5.5 TIME STAMP .....	12
<b>6 VIEWING MEDIA ON YOUR PC.....</b>	<b>12</b>
<b>7 SPECIFICATIONS.....</b>	<b>12</b>
<b>8 ABOUT THIS GUIDE.....</b>	<b>13</b>
<b>9 WARRANTY TERMS &amp; CONDITIONS .....</b>	<b>13</b>

## CAUTION

- Ensure you are using your Car Dash Cam within your countries' road laws. Please make sure you are familiar with your local road legislation before use.
- Avoid leaving your Car Dash Cam in direct sunlight for extended periods of time in an unventilated space.
- Please set time and date before you use this device to record.
- The results of GPS positioning are only for reference. The Car Dash Cam will lose GPS positioning abilities when signal is blocked (eg driving through tunnels, enclosed car parks).
- GPS positioning accuracy may vary depending on weather and surroundings such as dense cities, tunnels, or forests. GPS satellite signals cannot pass through most solid materials. Tinted windows may also affect the GPS signal.
- GPS positioning can take up to 3 minutes to gain an accurate position. This may result in your first clip of each journey not having GPS data tied to it.
- The values displayed in this system, such as speed, position, and the distance warning, may be affected by the surrounding environment.
- The system is to be used only for non-commercial use, within the limits permitted by the relevant laws.
- Avoid using the Car Dash Cam in the vicinity of any devices that emit radio interference (eg. *Microwave Ovens*).
- It is considered normal operation for the Car Dash Cam to get warm during use.

## SUPER CAPACITOR WARNING

- The **KPT-850** has a built in super capacitor, this is designed to record momentarily after your vehicle has been powered off.
- The **KPT-850** is designed to be powered using the included cable and 12V USB power
- The super capacitor is not designed to power the dash cam for long periods of use. Where possible please keep your **KPT-850** powered via the 12V USB power.
- Do not attempt to remove replace, or expose the super capacitor

## NOTES ON INSTALLATION

- It is advised that the Car Dash Cam is installed near the rear view mirror, at the top centre of the windshield for optimal operation.
- Make sure that the lens is within the range of the windscreen wiper to ensure a clear view when it rains.
- Do not touch the lens with your fingers. Finger prints left on the lens will result in unclear videos or photos. If photos or videos are blurred, please clean the lens gently with a microfiber cloth.
- Do not install the device on a tinted window. Doing so may damage the tint film and restrict the Car Dash Cam's GPS signal.
- Make sure that the installation position does not hinder or block the field of view or GPS signal.
- Only use the included cable to power the **KPT-850**.
- When running the power **KPT-850**'s power cable be sure to run it to the right of your windscreen ensuring that the cable does not impede the drivers view.

## PRODUCT INFORMATION

For latest manual and product updates please visit our website at [www.kapturecam.com.au](http://www.kapturecam.com.au) or [www.kapturecam.co.nz](http://www.kapturecam.co.nz)

### 1. INTRODUCTION

Thank you for purchasing a Kapture Car Dash Cam. Please read through these instructions before attempting to install or use this product.

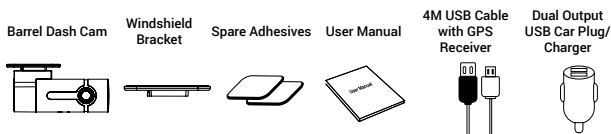
#### NOTE:

Your KPT-850 is configured by using the app (Refer page 8). There are no buttons or menus on the actual device.

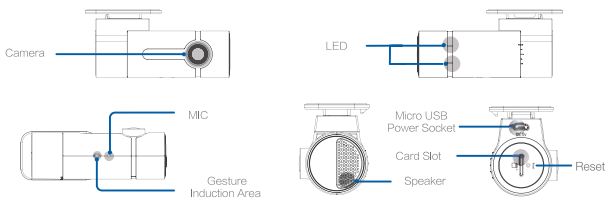
#### 1.1 FEATURES

- Recording Full HD 1080P footage at 30 frames per second
- Built in GPS
- WiFi Smart device connectivity
- 152° field of view
- Built in G Sensor
- App allowing video transfer and playback alongside GPS tracking
- Gesture Activated Snapshot

#### 1.2 PACKAGE CONTENTS



#### 1.3 PRODUCT OVERVIEW



#### 1.4 LED INDICATORS

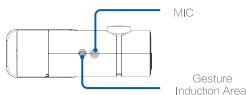
The LED indicators on the **KPT-850** let you know the recording and connection to your phone status.

##### LED STATUS

RECORDING	RED FLASHING LED
MOBILE PHONE CONNECTION	GREEN LED
DEVICE NOT RECORDING	SOLID RED or NO LED

#### 1.5 GESTURE INDUCTION AREA

Your **KPT-850** features a gesture Activated Snapshot that allows you to take a photo when you wave your hand across the Gesture Induction Area. In most installation cases, the gesture induction area will be facing downwards. To take an instant snapshot, wave your hand across the induction area. Images will be stored in your Album (Refer to FIG 3 page 9)



#### NOTE:

It is not necessary to touch this area to trigger a photo. Simply wave your hand across the Gesture Induction Area.

## 1.6 GPS RECEIVER

The GPS receiver is embedded in-line with the USB power cable. When installing the power cable in your vehicle please run the cable to the right of the interior of your windscreen to ensure that the GPS receiver sits correctly. The GPS receiver should not be adhered to any tint on your front windscreen as this may interfere with the GPS signal or damage your vehicle's tint.

---

### NOTE:

- GPS will be unavailable in covered or built up areas (e.g. tunnels, parking buildings, tall buildings, dense forest). When in these conditions the GPS signal may be blocked.
- If you receive a memory card error, please ensure that you are using a class 10 Micro SD card that is up to 64GB. Please also ensure that the Micro SD card is formatted in the FAT32 format.

---

## 2. GETTING STARTED

### 2.1 INSERTING MEMORY CARD

Please note that the MicroSD card can only go into your device one way. Attempting to install the card other than how it's described below will cause damage to either your card, device, or both.

**Do not** force your card into the slot. If force is required, it is likely that your card is in the wrong way. A correctly inserted card will require you to use your finger nail to push the card into the slot until a click sound is heard/felt.

#### 2.1.1 INSTRUCTIONS

Ensure that your **KPT-850** is **not** connected to any power. Position the MicroSD card with the gold contacts facing the small reset switch. The gold contact ends of your memory card should always go into the slot first. Use your fingernail to press the card into the slot until a click is heard.



Step 1



Step 2



Step 3



Step 4

---

### NOTE:

- Do not insert or remove a Micro SD card while your KPT-850 is powered up or recording. This may damage your Micro SD card.
- Please use Class 10 or higher rated Micro SD cards up to 64GB
- Please format the Micro SD card before initial use (in FAT 32 format if you are using a computer to format your Micro SD card). The card can also be formatted using the app.
- To quickly delete all items on your Micro SD card you can format the card in the settings menu of the App (*Refer to page 9*)

---

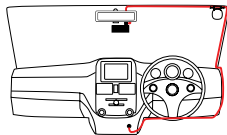
### 2.2 REMOVING MEMORY CARD

Ensure that your **KPT-850** is powered off. Using your fingernail press the SD card until a click is heard and release. The card should eject from the slot. Please ensure you always handle your Micro SD Card with care.

### 2.3 MOUNTING YOUR KPT-850

*Please read through all mounting instructions before you attempt to mount your KPT-850.*

It is recommended that you install the **KPT-850** in a position behind your rear-view mirror, ensuring that your front driving view is not obstructed. Once you have mounted your camera using your preferred method it is recommended that you run the power cable around your windscreen under your vehicles interior trim in the driver's side direction.



---

### NOTE:

If your car has side curtain air bags, please be very careful when running cables along your vehicles windows. Please ensure that you do not run the cables past any of these airbags as this can prevent the airbags from deploying in an emergency. If in any doubt, consult a professional installer.

## 2.4 INSTALLING YOUR KPT-850 WINDSHIELD BRACKET.

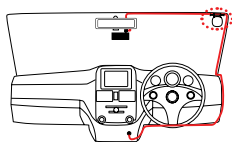
1. To install the Windscreen Bracket, clean your windscreen with an Alcohol Wipe making sure there is no dust, moisture, or oil on the desired mounting point of the windscreen. This is very important for correct adhesion.
2. Remove the protective film on the adhesive pad and with the open side of the slot facing the driver's side. Place the Windscreen Bracket in your desired placement, ensuring that the open side of the mount is facing the driver's side of the vehicle, and allowing at least 4cm between the top of the bracket and the top of your windscreen.
3. Firmly press and hold the windscreen bracket against your windscreen for 60 seconds to ensure that the adhesive sets.
4. Once the adhesive has set (allow 5 minutes), slide the barrel camera into the slot by sliding the camera from right to left direction until it stops.

### NOTE:

- It is recommended that the **KPT-850** is mounted behind your rear view mirror so that it is not obstructing the drivers view.
- Once installed it is not recommended that the Windshield Bracket is removed as it is not possible to re-install once it has been removed.

## 2.5 INSTALLING YOUR GPS RECEIVER

Using your preferred method, it is recommended that you run the power cable around your windscreen under your vehicles interior trim toward the driver's side. The 12V power cable is supplied with an in-line GPS receiver that must be mounted onto the windscreen with the supplied adhesive.



For best GPS reception, the GPS module should be placed as far away as possible from the barrel camera.

### NOTE:

- It is advised that you run the cable beneath head liner trim and under the dash ensuring that the cable does not interfere with the operation of your vehicle.

## 2.6 CONNECTING POWER TO YOUR KPT-850

Your **KPT-850** must be connected to a constant supply of power from your vehicles electrical system via the 12V cigarette or accessory port for continuous operation. Your **KPT-850** does not have an internal battery and will turn off when disconnected from its power source.

Your unit is supplied with a dual USB output 12VDC charger that will supply power to your unit, and offers a spare USB output to connect to other USB powered devices such as a mobile phone.

1. To connect power to your **KPT-850**, plug the Dual Socket USB Car Charger into your vehicles accessory power socket (cigarette lighter port), and then connect the USB end of the supplied cable to the **USB port labelled 2.4A** (The spare 1A socket can be used to charge any of your 1A USB devices capable of taking a 1A charge).
2. Connect the USB micro end of the cable into your **KPT-850** Barrel camera.



## 2.7 REMOVING THE KPT-850 FROM THE WINDSHIELD MOUNT

To remove your **KPT-850** from your car, simply slide the unit horizontally from left to right.

## 2.8 POWERING UP THE KPT-850

1. The **KPT-850** will power up and begin recording automatically once it has been correctly installed (micro SD card must be installed), and you start your vehicle.
2. A blinking RED LED (after approx. 30 seconds from start-up) indicates recording.

3. There are no buttons to press on the device so recording will only stop when the vehicle is turned off or if the micro USB cable is disconnected from the unit.

**NOTE:**

Recording will stop whilst playing back footage from your KPT-850 to your app.

### 2.8.1 MANUALLY POWERING OFF THE KPT-850

There are no buttons to press on the device so recording will only stop when the vehicle is turned off or if the micro USB cable is disconnected from the unit.

## 2.9 SMARTPHONE CONNECTION

Connecting your smartphone to your **KPT-850** allows you to transfer video files to your Smartphone and view your videos alongside your GPS footage.

### 2.9.1 DOWNLOADING THE APP

To wirelessly connect your smartphone to the **KPT-850** you will need to download the **Kapture KPT-850 App**. This can be found by searching "**KPT-850**" on the Apple App Store on iPhones or the Google Play Store on Samsung Galaxy Android smartphones.



**NOTE:**

1. The **KPT-850** is compatible with iPhones using iOS 8.0 and above.
2. The **KPT-850** is compatible with Samsung Galaxy models using Android 4.1 and above.

### 2.9.2 WIFI CONNECTION

Once you have downloaded the **KPT-850** app onto your smartphone, you will be ready to connect to your **KPT-850** via a WiFi connection. A WiFi connection from your barrel camera and your mobile phone must be established first to access media from the barrel camera.

1. To connect to your **KPT-850**, power up the device with it plugged into your vehicles power and your vehicles accessory power on.
2. Wait for approx. 30 seconds for the **KPT-850** to start up and go into your smartphones WiFi setting.
3. Once in your phones WiFi settings, connect to the **KPT-850's** WiFi SSID titled **KPT850-xxxxx** (Refer to FIG 2.9.2)
4. Use the password **12345678** then press connect. (Refer to FIG 2.9.3)
5. Wait for the phone to connect to the Barrel camera, a successful connection is established when **connected** is seen on the **KPT850-xxxxx's** SSID (Refer to FIG 2.9.4)
6. Once connected, open the **KPT-850** App. (Refer to page 9 - FIG 3 - point 1)

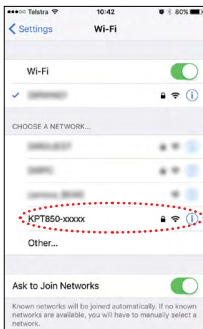


FIG 2.9.2

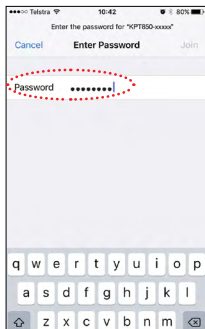


FIG 2.9.3

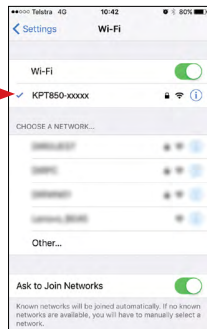


FIG 2.9.4



### 3. USING THE KPT-850 APP

Once you open the **KPT-850** App (ensuring your phone is connected to the camera via WiFi) the front page will give you access to options available such as live view, GPS data, Album, and app details. (Refer to FIG 3)

The below app screens are the most common and will be referenced throughout this manual. Please ensure to familiarise yourself with their functions as listed below.



FIG 3

FIG 3	
1	Open KPT-850 - Shows the live view of your KPT-850
2	Trip - Journey information with GPS information
3	Album - Photos & Videos downloaded onto phone
4	Me - FAQ and App information

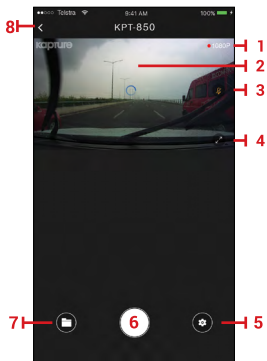


FIG 3.1

FIG 3.1	
1	Flashing Red LED indicates recording status
2	Main live view screen
3	Microphone on/off status
4	Landscape view
5	Settings menu
6	Instant image
7	Access to media on barrel camera
8	Return to main menu

#### 3.1 LIVE VIEW SCREEN

The live view screen is used to see the live feed from the **KPT-850** (Refer to FIG 3.1 - point 2) and is also where barrel camera media content can be found.

(Refer to FIG 3.1 - point 7)

#### 3.2 FORMATTING YOUR MEMORY CARD

To format your card, follow the following instructions:

1. Open the **KPT-850** app (Refer to FIG 3 above - point 1)
2. Press the **cog wheel** button to access the app settings (Refer to FIG 3.1 - point 5).
3. Scroll towards the bottom of the menu until "**Manage the SD card**" option is found and select it (Refer to FIG 3.2).
4. Memory card details are displayed with the **Format** option listed at the bottom. (Refer to FIG 3.3)
5. Format by selecting **Format** option, confirm selection (Refer to FIG 3.4)

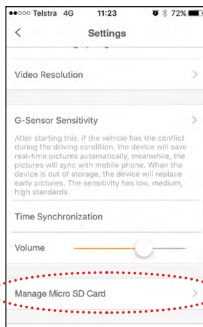


FIG 3.2

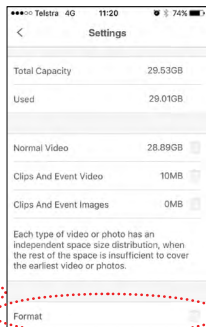


FIG 3.3

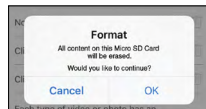


FIG 3.4

### 3.3 ALBUM (STORED ON KPT-850)

Your recorded videos and photos can be accessed via your smart device while connected to the KPT-850 via WiFi. Once connected, open the KPT-850 app, press the Open KPT-850 menu and then press the folder icon (Refer to page 9 FIG 3.1 point 7). This menu will allow you to view the recorded files stored on the Micro SD Card inserted in the KPT-850.

### 3.4 TRANSFERRING VIDEOS TO YOUR SMART DEVICE

Videos recorded on your KPT-850 can be transferred to your mobile phone so you can view them without being connected to your KPT-850. To Transfer files please follow the instructions below.

1. In the KPT-850 App press Open KPT-850 from the main app menu. (Refer to page 9 - FIG 3)
2. Press the folder icon on the live screen page (please note that recording will STOP whilst in any other menu other than live screen) (Refer to page 9 - FIG 3.1)
3. Press the **select** button in the top right hand corner (Refer to FIG 3.5)
4. Select the video/s you would like to transfer to your smart device. Selected videos will show a **white tick** next to the selected video/s. (Refer to FIG 3.6 - point 1)
5. Press the **download** button (Refer to FIG 3.6 - point 2) at the top left hand corner bottom centre of the screen.
6. Your files will now begin to download. (Large files will take a few minutes to download.)
7. Once downloaded your files can be found & played back from the Album menu. (Refer to page 9 - FIG 3 point 3)

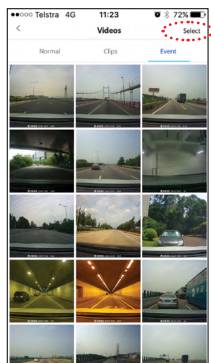


FIG 3.5

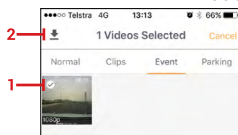


FIG 3.6

### 3.5 PLAYBACK (FROM KPT-850)

When playing back your video files the GPS mapping will be displayed underneath the playing video.

*Please note that the GPS mapping requires GPS connection at the time of recording and data connection at the time of playback (to download mapping).*

To playback your videos please follow the instructions below.

1. In the KPT-850 App press the Open KPT-850 on the main app screen. (Refer to page 9 - FIG 3)
2. Press the folder icon in the bottom left of the screen. (Refer to page 9 - FIG 3.1 - point 7) At this stage recording will pause.
3. Press the video thumbnail of the video to be played back. (Refer FIG 3.7)
4. Press the play button, your video will start playing. (Refer to FIG 3.8 - point 1)
5. To enter full screen playback, press the landscape orientation button. (Refer to FIG 3.8 - point 2)
6. To capture a specific moment in the video, press the camera icon. Images are stored in your Album. (Refer to FIG 3.8 - point 3)
7. If you wish to download the video showing to your phone, press the download button (Refer to FIG 3.8 - point 4)

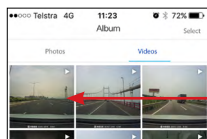


FIG 3.7

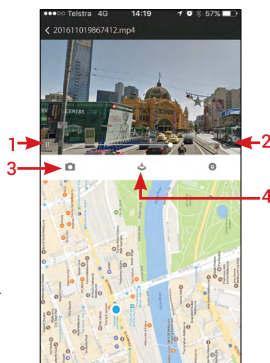


FIG 3.8

#### NOTE:

- The GPS mapping requires GPS connection at the time of recording and data connection at the time of playback (to download mapping).

- Android users, please make sure the Smart Network Switch or WiFi Scanning setting on your phone is turned off.
- For mapping to appear while connected to the **KPT-850's** WiFi connection, the WiFi assist function must be activated on your smartphone.
- If your smart device does not have WiFi assist, please transfer your video file to your smart device using the instructions noted in the **Transferring videos to your smart device section (Refer section 3.3 - page 10)** of this manual. Once transferred, connect to a WiFi or 4G internet connection. Once connected to the internet, playing back the transferred video will be accompanied by the GPS mapping data.
- GPS mapping will use a small amount of data to download mapping imagery.

### 3.6 DELETING VIDEOS (FROM SMART DEVICE)

Videos can be deleted on your mobile device by following the instructions below.

1. In the **KPT-850 App** select the **Album** option from the main app menu. (Refer to page 9 - FIG 3 - point 3)
2. Select whether you would like to delete **photos** (refer to FIG 3.9 - point 1) or **videos** (refer to FIG 3.9 - point 2) from the Album.

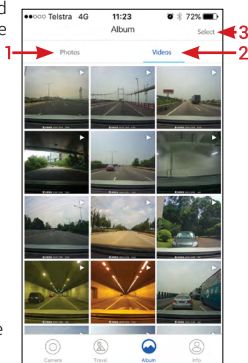


FIG 3.9

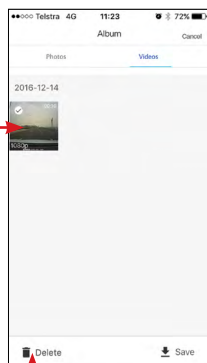


FIG 4

3. Press the **select** (refer to FIG 3.9 - point 3) button from the top right hand corner.
4. Select the videos or photos that you would like to delete. Selected videos or photos will show a white tick in the left corner of the thumbnail. (Refer to FIG 4 - point 1)
5. Press the delete button at the bottom left of the screen. (Refer to FIG 4 - point 2)

### 4. SETTINGS

Settings of the **App** and the **KPT-850** can be changed through the settings menu. The Settings menu can be accessed by pressing the cog icon in the bottom right corner of the live screen of the **App**. Once in the settings menu the **KPT-850** settings can be edited using the **'Device Setting'** section.

<b>M-F4592</b>	Mac address of the device
<b>VOICE PROMPT</b>	Turn vocal prompts on/off
<b>CONNECTION VERIFICATION</b>	Control what smart devices can connect to your <b>KPT-850's</b> WiFi connection
<b>PHOTOGRAPH WITH VIDEO</b>	Takes a short video after a picture is taken lasting 5 seconds at start and 5 seconds at the end
<b>SOUND RECORDING</b>	Record video with or without audio
<b>GESTURE PHOTOGRAPHY</b>	Gesture Activated Snapshot settings
<b>LANGUAGE</b>	English or Chinese
<b>RESOLUTION</b>	Records in 1080P or 720P
<b>G-SENSOR</b>	Adjust the built in G Sensor sensitivity
<b>TIME SYNCHRONIZATION</b>	Synchronize the time on your <b>KPT-850</b> with the time on your smart device.
<b>VOLUME</b>	Adjusts volume of barrel camera
<b>CARD STORAGE MANAGEMENT</b>	Overview of memory card and memory left, used, etc. Format option is located in this menu
<b>VERSION CHECK</b>	Checks to ensure the latest App version is installed

## 5. FEATURES

### 5.1 GPS

GPS records your location and speed and saves this information to your video files as it is being recorded. This data is then played back via the **KPT-850** Smartphone App showing your mapped location and speed at the time of recording.

### 5.2 WIFI

WiFi is used to connect your **KPT-850** to your smart device. By using the **KPT-850 App**, you can edit setting on the camera, playback videos and GPS recording, and transfer video.

### 5.3 GESTURE ACTIVATED SNAPSHOT

The Gesture Activated Snapshot feature at the front of the camera will trigger a snapshot and when you move your hand in front of the sensor. Files are saved in your Album. (These clips are saved away from the normal loop recording files and will not be recorded over until manually deleted.) The Gesture Activated Snapshot settings can be adjusted via the Gesture Photography setting in the **KPT-850 App**. To access **Gesture Activated Snapshot go to Open KPT-850>Tool Button>Gesture Photography**

### 5.4 G-SENSOR

The built-in G Sensor detects impacts on your vehicle and saves the video that is being recorded at the time of impact to the EVENT section in the **KPT-850** Video library headings. These files then will not be overwritten until they have been manually deleted. The G Sensor sensitivity can be adjusted using the G Sensor setting in the **KPT-850 App**. To access G-Sensor **Open KPT-850 > Tool button > G-Sensor** (Refer to page 11).

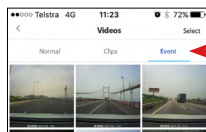


FIG 4.1

### 5.5 TIME STAMP

This is important as some insurance companies will not honor footage as evidence unless it is correctly date stamped. The **KPT-850** will stamp your recorded footage with the current time and date. The time and date of the **KPT-850** can be synchronized via the **KPT-850 App** which allows for syncing with the date and time of your mobile phone. To access press **Open KPT-850 > Tool button > Time Synchronization**.

## 6. VIEWING MEDIA ON YOUR PC

To access your videos, you will need to eject the Micro SD card (*not included*) from your **KPT-850** and connect it to your computer using a SD card converter (*not included*) if your computer has a SD card slot, or via a USB Micro SD card reader (*not included*) if your computer does not have a SD card slot.

The Micro SD card should appear as a Removable Storage Device on your computer after being connected. Most standard video players, like Windows Media Player and Quicktime will be able to play back videos.

## 7. SPECIFICATIONS

<b>MAX VIDEO RESOLUTION</b>	1080P@30fps mp4
<b>AUDIO INFORMATION</b>	8KHz, 2 channels, AAC
<b>LENS</b>	6-glasses 152° Field of view, F1.8
<b>STORAGE MEDIA</b>	Class 10 Micro SD Card (TF) up to 64GB
<b>WI-FI</b>	2.4GHz, 802.11b/g/n
<b>OPERATING TEMPERATURE</b>	-20°C ~ 70°C
<b>G-SENSOR</b>	Three-axis accelerometer
<b>OPERATING VOLTAGE</b>	5VDC@1A
<b>INTERFACE</b>	Micro USB
<b>INTERNAL POWER METHOD</b>	Super Capacitor
<b>MICROPHONE</b>	Yes
<b>WEIGHT</b>	50g
<b>DIMENSIONS</b>	100mm x 35mm x 47mm

## 8. ABOUT THIS GUIDE

The content in this document is for information purpose and is subject to change without prior notice. We made every effort to ensure that this User Guide is accurate and complete. However, no liability is assumed for any errors and omissions that may have occurred. The manufacturer reserves the right to change the technical specifications without prior notice.

## 9. WARRANTY TERMS & CONDITIONS

Our goods come with guarantees that cannot be excluded under the Australian & New Zealand Consumer Law. You are entitled to a replacement or refund for a major failure and for compensation for any other reasonably foreseeable loss or damage. You are also entitled to have the goods repaired or replaced if the goods fail to be of acceptable quality and the failure does not amount to a major failure.

This warranty is provided in addition to your rights under the Australian & New Zealand Consumer Law.

Directed Electronics warrants that this product is free from defects in material and workmanship for a period of 12 months from the date of purchase or for the period stated on the packaging. This warranty is only valid where you have used the product in accordance with any recommendations or instructions provided by Directed Electronics.

This warranty excludes defects resulting from alterations of the product, accident, misuse, abuse or neglect.

In order to claim the warranty, you must return the product to the retailer from which it was purchased or if that retailer is part of a National network, a store within that chain, along with satisfactory proof of purchase. The retailer will then return the goods to Directed Electronics. Directed Electronics will repair, replace or refurbish the product at its discretion. The retailer will contact you when the product is ready for collection. All costs involved in claiming this warranty, including the cost of the retailer sending the product to Directed Electronics, will be borne by you.

**Directed Electronics Address:** 44 Translink Drive, Keilor Park Victoria Australia 3042

**Ph:** +61 03 8331 4800

**Email:** [service@kapturecam.com.au](mailto:service@kapturecam.com.au)





YOUR EYEWITNESS ON THE ROAD™