



Full HD Dash camera 3.0" IPS Screen  
with Rear Camera & 24 hr Parkmode



**KPT-522**  
**USER MANUAL**





# CONTENTS

<b>1.0 CAUTION</b>	<b>4</b>
1.1 Battery Warning	5
1.2 Product Information	6
<b>2.0 INTRODUCTION</b>	<b>7</b>
2.1 Package Contents	8
2.2 Product Overview	9
<b>3.0 BUTTON FUNCTIONS</b>	<b>10</b>
<b>4.0 GETTING STARTED</b>	<b>11</b>
4.1 Inserting a Micro SD Card	11
4.2 Removing a Micro SD Card	12
4.3 Installing the KPT-522	13
4.4 Adjusting the Angle of the KPT-522	14
4.5 Installing the Rear Camera	15
4.5.1 Installation Guide	15

4.5.2	Rear Camera Wiring Diagram .....	16
4.5.3	Rear Camera Features .....	17
4.6	Connecting to Power .....	18
4.7	LED Indicator .....	19
<b>5.0</b>	<b>POWERING THE KPT-522 ON/OFF .....</b>	<b>19</b>
5.1	Auto Power On/Off .....	19
5.2	Manual Power On.....	19
5.3	Manual Power Off .....	20
5.4	Reset the Car DVR .....	20
<b>6.0</b>	<b>INITIAL SETTINGS.....</b>	<b>20</b>
6.1	Formatting the Inserted Micro SD Card.....	20
<b>7.0</b>	<b>SETTING THE TIME AND DATE .....</b>	<b>21</b>
<b>8.0</b>	<b>VIDEO MODE.....</b>	<b>22</b>
<b>9.0</b>	<b>INTERFACE .....</b>	<b>23</b>

9.1	Video Mode .....	23
9.2	Setup Menu .....	24
<b>10.0</b>	<b>VIDEO MENU .....</b>	<b>25</b>
<b>11.0</b>	<b>PICTURE MODE.....</b>	<b>29</b>
<b>12.0</b>	<b>PLAYBACK .....</b>	<b>30</b>
<b>13.0</b>	<b>WARRANTY TERMS &amp; CONDITIONS .....</b>	<b>31</b>

## 1.0 CAUTION

- Ensure you are using your Car Dash Cam within your countries' road laws. Please make sure you are familiar with your local road legislation before use.
- Avoid leaving your Dash Cam in direct sunlight for extended periods of time in an unventilated space.
- Please set time and date before you use this device to record.
- The notifications given by the Car Dash Cam are suggestions only, please drive to the actual conditions.
- The system is to be used only for non-commercial use, within the limits permitted by the relevant laws.
- Avoid using the Car Dash Cam near any devices that emit radio interference (e.g. Microwave Ovens).
- It is considered normal operation for the Car Dash Cam to get warm during use.

## **1.1 BATTERY WARNING**

Always charge the Car Dash Cam using the provided charger. Improper charging of the Car Dash Cam and may result in failure of the internal battery.

Never dismantle the Car Dash Cam or expose the internal battery.

Do not dispose of the Car Dash Cam in fire.

Dispose of the Car Dash Cam observing local regulations being mindful of the internal battery.

Do not attempt to replace or expose the internal battery.

## NOTES ON INSTALLATION

- It is advised that the Car Dash Cam is installed near the rear view mirror, at the top centre of the windshield for optimal operation.
- Make sure that the lens is within the range of the windscreen wiper to ensure a clear view when it rains.
- Do not touch the lens with your fingers. Finger prints left on the lens will result in unclear videos or photos. If photos or videos are blurred, please clean the lens gently with a microfibre cloth.
- Do not install the device on a tinted window. Doing so may damage the tint film and restrict the Car Dash Camera's recording capabilities.
- It is recommended to install the rear camera near your license plate to provide an unhindered view from the rear of your vehicle.
- Only use the included cable to power the Car Dash Cam.
- The KPT-522 is designed to be constantly connected to the included power supply, and is NOT designed to be used solely with the camera's built in battery.

## 1.2 PRODUCT INFORMATION

For latest manual and product updates please visit our website at [www.kapturecam.com.au](http://www.kapturecam.com.au) or [www.kapturecam.co.nz](http://www.kapturecam.co.nz)



## 2.0 INTRODUCTION

Thank you for purchasing a Kapture Dash Cam. Please read through instructions before attempting to install or use this product.

This User guide is designed to assist with the day to day operation of the KPT-522.

Before attempting to use or install your Kapture KPT-522, please ensure you have read and understood all of the safety notes below.

- Avoid leaving your KPT-522 in direct sunlight for extended periods of time in an unventilated space.
- Do not expose your KPT-522 to liquids, excessive dusty conditions or temperatures exceeding 60°C.
- Only use the included cables to power and charge the KPT-522.
- Only use the rear camera supplied in the packaging.
- Please do not attempt to adjust the KPT-522 position or settings whilst you are operating your vehicle.
- Please clean the windshield thoroughly removing all dust and dirt particles before fixing the adhesive mount.
- Since the mount sticks on the wind shield with 3M mount, please ensure that the position of the camera is best located to capture maximum area.

- We suggest you to power-on the dash camera and test the playback image on screen first prior to removing the 3M tape for installation.
- Only remove the 3M tape when you are satisfied with the dash camera placement and image position are delivering the best possible image and view of the road ahead.
- Ensure you are using your KPT-522 within your countries' road laws. Please make sure you are familiar with your local road legislation before use.

## 2.1 PACKAGE CONTENTS



KPT-522  
Dash Cam



Dash Cam  
3M Mount



Rear Camera  
with 6M Cable



Car Charger



Spare 3M  
Adhesive



Rear Camera  
Mount Screws



User Guide

## 2.2 PRODUCT OVERVIEW

1. Micro SD card slot\*
2. Up Button
3. Menu Button
4. Down Button
5. HDMI Port/Rear Camera In
6. Slot for fixing mount
7. Mini USB power socket
8. Recording Indicator LED
9. Display Screen
10. Rec / OK Button
11. Mode Button
12. Lock Recording Button
13. ON / OFF Power Button
14. Microphone
15. Reset
16. Lens
17. Power ON LED Indicator



### 3.0 BUTTON FUNCTIONS

#### **MODE BUTTON**

When Device is not recording, press the M button to switch between Video Mode / Photo Mode / Play Back mode.

#### **OK BUTTON**

Press the OK Button to start/stop video recording in Video mode.

Press the OK Button to take photo in Camera mode.

Press the OK Button to play/pause current video on playback mode.

#### **LOCK FILE BUTTON**

When DVR is recording, Press Lock Button to lock the current file. Locked file won't be over recorded during loop recording.

#### **POWER BUTTON**

Press and hold the Power Button to Power Off the Device. Press once to switch LCD Screen Off however DVR will continue recording.

#### **DOWN BUTTON**

In Settings menu use the down key to toggle between the settings.

Press to turn On/Off the inbuilt Microphone.

#### **MENU BUTTON**

Press to enter or exit the Settings Menu.

#### **UP BUTTON**

In the Settings menu use the Up Button to toggle between the settings.

#### **RESET BUTTON**

Press to reset to factory settings.

#### **MIC**

Microphone Position

#### **TF CARD SLOT**

Micro SD Card Slot. Please use Maximum 32 GB, Class 10 and above.

#### **USB INTERFACE**

Mini USB Power cable to connect with power adapter provided in the packaging.

## **4.0 GETTING STARTED**

### **4.1 INSERTING A MICRO SD CARD**

With the Car DVR turned off and the screen facing towards you insert your Micro SD Card (not included) in the slot on the right side of the KPT-522 with the text on the Micro SD card away from you. Push the memory card in until a click is heard.

## 4.2 REMOVING A MICRO SD CARD

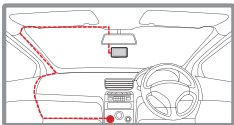
Ensure that the KPT-522 is powered off, and with your thumbnail press in the Micro SD Card until a click is heard. The Micro SD Card will eject from the KPT-522 when released.

### **NOTE:**

- Micro SD Card is not included.
- Do not remove or insert the memory card while the Car DVR is turned on as this may damage the memory card or corrupt the memory cards stored data.
- Please use a Class 10 or higher rated micro SD card with a maximum capacity of 32GB.
- Please format the Micro SD card before the initial use.
- When removing the memory card, be careful as the card may eject quickly.

### 4.3 INSTALLING THE KPT-522

1. Connect the Window mount from the top of the DVR and rotate the wheel (See Fig 1 on **page 14**) clock wise till it is tight.
2. Please follow the instructions on **page 6** before continuing.
3. Remove the protective stickers from the Car DVR and the 3M Mount.
4. Press the mount base firmly against the windscreen and hold for 30 seconds.
5. Insert the power cable adapter onto the dash camera power socket.
6. Rear camera connector has to be inserted in HDMI port of the dash camera.

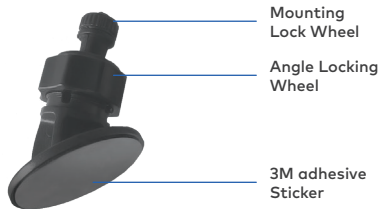


#### NOTE:

- It is advised that the KPT-522 is installed in the centre of the windscreen behind the rear view mirror.

#### 4.4 ADJUSTING THE ANGLE OF THE KPT-522

1. Loosen the Angle Locking Wheel on the mounting bracket, and adjust the vertical and horizontal angle of the camera.
2. Tighten the Angle Locking Wheel to lock the position of the camera.



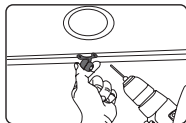
(Fig .1) Window Mount



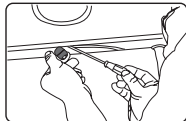
## 4.5 INSTALLING THE REAR CAMERA

### 4.5.1 INSTALLATION GUIDE

1. Select a flat and centred location near the number plate lamp at the rear of the vehicle to mount camera.
2. Attach tape to the bracket of the camera to hold the camera in position while installing, and drill two small holes, one for the first screw, the second to run the reverse camera cable through.

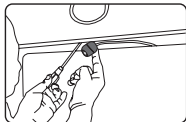
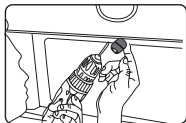


3. Use a screw driver to fix the first screw, leaving the screw loose enough to adjust the camera.

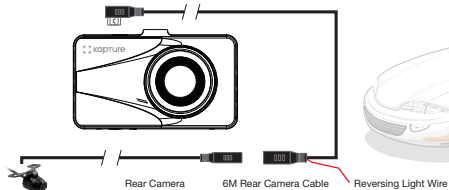


4. Insert the camera wire through the intended drilled hole checking the installation position.

5. Mark the position suitable for the second screw and drill a small hole for it.
6. Fix the second screw and securely tighten both screws.



#### 4.5.2 REAR CAMERA WIRING DIAGRAM



### **4.5.3 REAR CAMERA FEATURES**

After successfully installing and connecting of the rear camera into the main DVR, the rear camera will be displayed on the Dash Cam's 3.0" IPS Screen.

Both Cameras will instantaneously start recording after DVR is powered ON.

Both Front and Rear Camera images will now be displayed on your Dash Camera's 3.0" IPS Screen, you can switch between by using the UP key.

Display can switch between:

1. Full Front Camera view
2. Full Rear Camera view
3. Half Front and Rear view

When your vehicle is in reverse gear, the display will change to the Rear Camera view with Reversing Grid Lines to assist the driver when reversing / parking.

#### 4.6 CONNECTING TO POWER

Only use the included charger to power and charge the Car DVR.

1. Once the Car DVR is securely installed on your vehicle's windshield, plug the DC Power Plug into your vehicle's cigarette lighter.
2. Run the power cable along your vehicle's console and windshield and plug the USB Micro plug into the Car DVR and the USB A end into the DC Power Plug.

##### **NOTES:**

- It is recommended that the Car DVR is installed behind your vehicle's rear view mirror.
- Make sure that the camera view is not obstructed by any window tint or any other objects.
- The KPT-522 is designed to be constantly powered by the included DC Power Plug. The internal battery is designed to hold saved settings and power the camera when in Park Mode. The battery is NOT designed for primary use.

#### 4.7 LED INDICATOR

- Flashing blue light indicates recording is in progress.
- Flashing red light indicates the internal battery is charging.

#### **NOTE:**

- The KPT-522 is designed to be constantly powered by the included DC Power Plug. The internal battery is designed to hold saved settings and power the camera when in Park Mode. The battery is NOT designed for primary use.

#### 5.0 POWERING THE KPT-522 ON/OFF


##### 5.1 AUTO POWER ON/OFF

When the Car DVR is correctly installed and connected to your vehicle's 12v power supply, the Car DVR will automatically power up and start recording when the vehicle accessories are activated.

##### 5.2 MANUAL POWER ON

Hold the  Power button on the lower right hand side of the camera until the Kapture start up screen appears.

### 5.3 MANUAL POWER OFF

Make sure that recording has been stopped and then press the  Power button on the lower right hand side of the car DVR. After powering down the device please wait for 10 seconds before turning the Car DVR back on.

### 5.4 RESET THE CAR DVR






If the Car DVR does not function normally, try restarting the car DVR. To restart the car DVR, using a small pin press and hold the Reset button on the bottom side of the camera.

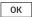

### 6.0 INITIAL SETTINGS

Before using the Car DVR we recommend Formatting the Inserted Micro SD Card and setting the correct Time and Date.

#### 6.1 FORMATTING THE INSERTED MICRO SD CARD

Formatting the Micro SD card will delete all information on the inserted Micro SD Card and prepare the card for use with the Car DVR.

1. Press the  Button to stop the Car DVR from recording.
2. Press the  Menu Button to enter the Settings Menu.
3. Use the  and  Buttons to navigate the Settings Menu and highlight the Format setting and press the right  to select.

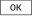



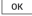
4. Select SD Card and press the  OK Button.
5. Press the  OK Button to confirm.



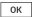

#### **NOTES:**

- Menus cannot be accessed while the camera is recording. Please stop the recording before attempting to access the menu.
- Formatting your Micro SD Card will delete all files from the card. Once these files have been deleted you will not be able to recover them.

## **7.0 SETTING THE TIME AND DATE**

Setting the Time and Date allows you to stamp your footage with the time as a reference.



1. Press the  Button to stop the Car DVR from recording.
2. Press the  Button to enter the Settings Menu.
3. Use the  and  Buttons to navigate the Settings Menu and highlight the Date/Time setting and press the right  button to select.

4. Use the  and  buttons to edit the selected digit and the right  button to confirm and progress to the next digit. The final field sets the format that the date will be presented in, pressing the  button with this field highlighted will save the date and time and return you to the settings menu.

**NOTES:**

- Menus cannot be accessed while the camera is recording. Please stop the recording before attempting to access the menu.
- Once the time and date is set, it can be stamped onto your footage using the Date Stamp setting. Please see section Date Stamp for more details.

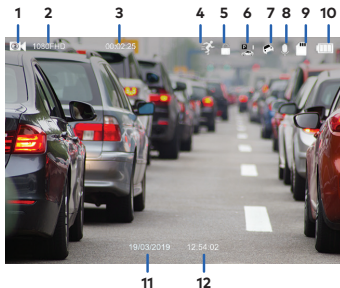
## 8.0 VIDEO MODE

When the Car DVR is powered up the video screen will start by default. In this screen recording will automatically start and can be stopped by pressing the  Button. To access the Video Menu, ensure that the Car DVR is not recording then press the  button.



## 9.0 INTERFACE






### 9.1 VIDEO MODE



1. **Video Mode:** Number 3 shows the loop recording duration.
2. **Resolution:** 1080 FHD Video Recording Resolution.
3. **Duration:** 00:00:01 Loop Recording timer.
4. **Motion Detection:** Displays Motion Detection.

5. **Lock File:** Current Recorded File Locked indicator.
6. **Park Mode:** The highlighted bar indicates the sensitivity of Park mode with 1 Bar indicates Low Sensitivity.
7. **G-Sensor:** The highlighted bar indicated the sensitivity of G-Sensor with 1 Bar indicates Low Sensitivity.
8. **Microphone:** Turns on or off the Microphone.
9. **Micro SD Card:** Indicates inserted SD Card.
10. **Battery:** Indicates battery level.
11. **Date:** (01/01/2019)
12. **Time:** (00:00:01)

## 9.2 SETUP MENU

1. Press  to stop Recording.
2. Press the  Menu button to enter into the Settings Menu.
3. Press the  and  Button to select the setting you wish to change.
4. Press  Button on your selected option.
5. New Setting will be shown on the top left of the screen and also on the selected setting icon.

## 10.0 VIDEO MENU

Menu	Select Settings	Description
Resolution	1080P FHD 720P FHD	Higher resolution gives your footage more detail but uses more storage space.  Lower resolution saves storage space. <b>Default: 1080P</b>
Loop Recording	Off / 1, 3 or 5 Minutes	Loop Recording defines the length of time the KPT-522 records before creating a new file. Using the Off setting will record the longest possible loops under the file size of 1 GB (around 5 minutes). <b>Default: 3 Mins</b>
Photo Resolution	12M 4032 x 3024 8M 3264 x 2448 5M 2592 x 1944 2M 1920 x 1080	Higher resolution gives your footage more detail but uses more storage space.  Lower resolution saves storage space. <b>Default: 12M</b>

## VIDEO MENU CONT'

Menu	Select Settings	Description
Language	Select Language	Select Menu Language. <b>Default: English</b>
Date/Time	Set Date and Time	Using the Up/Down and OK buttons to enter the date and time (24hr clock) to stamp onto your footage. Once you have finished use the Menu button to save and return to the Settings Menu.
G-Sensor	Off / Low / Medium / High	To adjust the sensitivity of the G-sensor. High is the highest sensitivity and Low is the lowest. <b>Default: Low</b>
Park Mode	Off / Low / Medium / High	Park Mode helps to make your car safe by recording the video even when the Engine is switched off. Your DVR will record the incidents when ever it detects an impact and the G-Sensor is triggered. Park Mode will record a maximum of 10 instances during a 24 hour period, once the battery has been fully charged. <b>Default: Off</b>

## VIDEO MENU CONT'

Menu	Select Settings	Description
Motion Detection	Off / On	DVR will stop recording if it doesn't detect any motion and will immediately start recording if it detects motion. <b>Default: Off</b>
Number Plate Stamp	Input Number Plate	Input your car number plate and it will be watermarked on the recorded footage.
Date Stamp On	Off / On	Select On/Off to have the date and time stamped on the recorded Video. <b>Default: On</b>
Microphone	Off / On	Turning this setting off mutes the built in microphone. <b>Default: On</b>
Beep sound	Off / On	Mutes control for Key beeps. <b>Default: On</b>

## VIDEO MENU CONT'

Menu	Select Settings	Description
Auto Display Off	Off / 1 min / 3 mins / 5 mins	Auto Screen Saver setting determines the amount of time before the display screen turns off.  (KPT-522 will keep on recording even the display is Off).  <b>Default : Off</b>
Flicker	50Hz / 60 Hz	Screen Hz setting.  <b>Default: 50 Hz</b>
Format	Cancel / OK	Format the inserted Micro SD Card, deleting all photos, videos and data.
Default Setting	Restore factory settings	Cancel / OK
Version	OK	Displays the installed firmware version.

## 11.0 PICTURE MODE



1. Press OK to Stop Recording.
2. Press M (Mode Key) once to enter Picture Mode.
3. Press OK Key to take pictures.

## 12.0 PLAYBACK

Video Play/  
Pause



Battery

Resolution  
of recorded  
Video

File Name

1. Press the OK Button once to Stop Recording.
2. Press M (Mode Key) twice to enter Playback Mode.
3. Press  and  button to select the desired file to be played back.
4. Press the OK button to Playback selected video file and then press again to pause.



### **13.0 WARRANTY TERMS & CONDITIONS**

Our goods come with guarantees that cannot be excluded under the Australian Consumer Law. You are entitled to a replacement or refund for a major failure and for compensation for any other reasonably foreseeable loss or damage. You are also entitled to have the goods repaired or replaced if the goods fail to be of acceptable quality and the failure does not amount to a major failure.

This warranty is provided in addition to your rights under the Australian Consumer Law. Directed Electronics warrants that this product is free from defects in material and workmanship for a period of 12 months from the date of purchase or for the period stated on the packaging. This warranty is only valid where you have used the product in accordance with any recommendations or instructions provided by Directed Electronics.

This warranty excludes defects resulting from alterations of the product, accident, misuse, abuse or neglect. In order to claim the warranty, you must return the product to the retailer from which it was purchased or if that retailer is part of a National network, a store within that chain, along with satisfactory proof of purchase. The retailer will then return the goods to Directed Electronics.

Directed Electronics will repair, replace or refurbish the product at its discretion. The retailer will contact you when the product is ready for collection. All costs involved in claiming this warranty, including the cost of the retailer sending the product to Directed Electronics, will be borne by you.

**Directed Electronics Address: 44 Translink Drive, Keilor Park Victoria 3042**

**Ph: +61 03 8331 4800**

**Email: [service@kapturecam.com.au](mailto:service@kapturecam.com.au)**



# YOUR EYEWITNESS ON THE ROAD™



All Images, Information and Content are Copyright © 2019 Directed Electronics Australia Pty Ltd. All Rights Reserved.

[www.kapturecam.com.au](http://www.kapturecam.com.au) | [www.kapturecam.co.nz](http://www.kapturecam.co.nz)

**DIRECTED**  
AUSTRALIA & NZ

[www.directed.com.au](http://www.directed.com.au) | [www.directed.co.nz](http://www.directed.co.nz)