



# 1080P FULL-HD DUAL CHANNEL DASH CAMERA

With 2.4" IPS Screen, WIFI, GPS & FHD Rear Camera



\* Includes  
1080P Rear Camera

**KPT-1022**  
**USER MANUAL**





## CONTENTS

<b>1.0 CAUTION</b>	<b>4</b>
1.1 Battery Warning	5
1.2 Product Information	6
<b>2.0 INTRODUCTION</b>	<b>6</b>
2.1 Package Contents	7
2.2 Product Overview	8
<b>3.0 BUTTON FUNCTIONS AND INDICATORS</b>	<b>9</b>
<b>4.0 GETTING STARTED</b>	<b>10</b>
4.1 Inserting A Micro SD Card	10
4.2 Removing A Micro SD Card	11
4.3 Installing The KPT-1022	11
4.4 Installing The Rear Camera	12
4.4.1 Installation Guide	12
4.4.2 Rear Camera Wiring Diagram	14
4.4.3 Rear Camera Features	14
<b>5.0 CONNECTING TO POWER</b>	<b>15</b>
<b>6.0 LED INDICATOR</b>	<b>16</b>
<b>7.0 POWERING THE KPT-1022 ON/OFF</b>	<b>16</b>
7.1 Auto Power On/Off	16
7.2 Manual Power On	16
7.3 Manual Power Off	16
7.4 Reset The Car DVR	17
<b>8.0 INITIAL SETTINGS</b>	<b>17</b>
8.1 Formatting The Inserted Micro SD Card	17
8.2 Setting The Time And Date	18

<b>9.0</b>	<b>REAL TIME ROAD ALERTS.....</b>	<b>18</b>
9.1	Speed Camera Alert.....	18
9.2	Blackspot Alert.....	18
9.3	School Zone Alert.....	19
9.4	Railway Crossing Alert.....	19
<b>10.0</b>	<b>INTERFACE .....</b>	<b>20</b>
10.1	Video Mode.....	20
<b>11.0</b>	<b>PLAYBACK VIDEO.....</b>	<b>21</b>
11.1	Setup Menu.....	21
<b>12.0</b>	<b>SOFTWARE PLAYBACK .....</b>	<b>25</b>
<b>13.0</b>	<b>INSTALLING APP ON SMART PHONE.....</b>	<b>26</b>
<b>14.0</b>	<b>WARRANTY TERMS &amp; CONDITIONS .....</b>	<b>26</b>
<b>15.0</b>	<b>NOTES .....</b>	<b>28</b>



## 1.0 CAUTION

- Ensure you are using your Car Dash Cam within your countries' road laws. Please make sure you are familiar with your local road legislation before use.
- Please set time and date before you use this device to record.
- The notifications given by the Car Dash Cam are suggestions only, please drive to the actual conditions.
- The results of GPS positioning are only for reference. The Car Dash Cam will lose GPS positioning abilities when signal is blocked (e.g. driving through tunnels, enclosed car parks).
- GPS positioning accuracy may vary depending on weather and surroundings such as dense cities, tunnels, or forests. GPS satellite signals cannot pass through most solid materials. Tinted windows may also affect the GPS signal.
- The values displayed in this system, such as speed, position, and the distance warning, may be affected by the surrounding environment.
- The system is to be used only for non-commercial use, within the limits permitted by the relevant laws.
- Avoid using the Car Dash Cam near any devices that emit radio interference (e.g. Microwave Ovens).
- It is considered normal operation for the Car Dash Cam to get warm during use.

## 1.1 BATTERY WARNING

- Always charge the Car Dash Cam using the provided charger. Improper charging of the Car Dash Cam may result in failure of the internal battery.
- Never dismantle the Car Dash Cam or expose the internal battery.
- Do not dispose of the Car Dash Cam in fire.
- Dispose of the Car Dash Cam observing local regulations being mindful of the internal battery.
- Do not attempt to replace or expose the internal battery.

### NOTES ON INSTALLATION

- It is advised that the Car Dash Cam is installed near the rear view mirror, at the top centre of the windshield for optimal operation.
- Make sure that the lens is within the range of the windscreen wiper to ensure a clear view when it rains.
- Do not touch the lens with your fingers. Finger prints left on the lens will result in unclear videos or photos. If photos or videos are blurred, please clean the lens gently with a microfibre cloth.
- Do not install the device on a tinted window. Doing so may damage the tint film and restrict the Car Dash Cam's GPS signal.
- Make sure that the installation position does not hinder or block the field of view or GPS signal.
- Only use the included cable to power the Car Dash Cam.
- The KPT-1022 is designed to be constantly connected to the included power supply, and is NOT designed to be used solely with the camera's built in battery.

## 1.2 PRODUCT INFORMATION

For latest manual and product updates please visit our website at [www.kapturecam.com.au](http://www.kapturecam.com.au) or [www.kapturecam.co.nz](http://www.kapturecam.co.nz).

## 2.0 INTRODUCTION

Thank you for purchasing a Kapture Dash Cam. Please read through instructions before attempting to install or use this product.

This User guide is designed to assist with the day to day operation of the KPT-1022.

Before attempting to use or install your Kapture KPT-1022, please ensure you have read and understood all of the safety notes below.

- Do not expose your KPT-1022 to liquids, excessive dusty conditions or temperatures exceeding 60°C.
- Only use the included cables to power and charge the KPT-1022.
- Please do not attempt to adjust the KPT-1022 position or settings whilst you are operating your vehicle.
- Please clean the windshield thoroughly removing all dust and dirt particles before fixing the adhesive mount.
- Since the mount sticks onto the windshield using a 3M adhesive, please ensure that the position of the camera is best located to capture the maximum viewing area.
- We suggest you to power-on the dash camera and test the playback image on screen first prior to removing the 3M tape for installation.
- Only remove the 3M tape when you are satisfied with the dash camera placement and image position are delivering the best possible image and view of the road ahead.



- Ensure you are using your KPT-1022 within your countries' road laws. Please make sure you are familiar with your local road legislation before use.

## 2.1 PACKAGE CONTENTS



KPT-1022  
Dash Cam



Dash Cam  
3M Mount



Spare 3M  
Adhesive Plate



12/24v Car  
Charger



1080P FHD  
Rear Camera

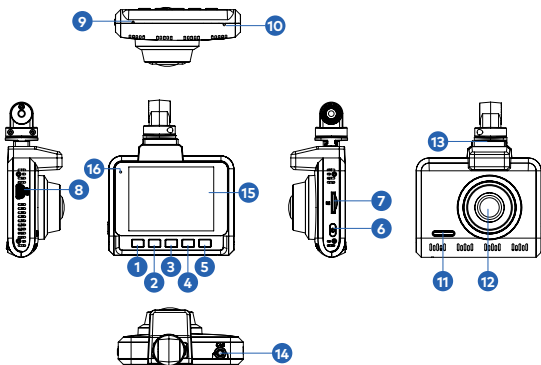


User  
Guide



Electrostatic  
Film x 2

## 2.2 PRODUCT OVERVIEW







- |                          |                             |
|--------------------------|-----------------------------|
| 1. Menu/Mode Button      | 10. Microphone              |
| 2. Up Button             | 11. Speaker                 |
| 3. Lock Recording Button | 12. Lens                    |
| 4. Down Button           | 13. Slot for Mount          |
| 5. Rec/Ok Button         | 14. Cam/Rear Camera In      |
| 6. ON/OFF Power Button   | 15. LCD Screen              |
| 7. Micro SD Card slot*   | 16. Recording Indicator LED |
| 8. Mini USB Power socket |                             |
| 9. Reset                 |                             |

### 3.0 BUTTON FUNCTIONS AND INDICATORS

Please press the OK button to stop recording before menu can be used.

No.	Key	Instruction
M	Menu / Mode Button	Press to enter General Settings Menu. Press and hold to enter Playback mode.
△	Up Button	In the Settings menu use the Up Button to toggle between the settings.
⚠	Lock Recording Button	When DVR is recording, Press Lock Button to lock the current file. Locked file won't be over recorded during loop recording. Also turns on/off WIFI.
▽	Down Button	In Settings menu use the down key to toggle between the settings.
OK	Rec / OK Button	Press the OK Button to start/stop video recording in Video mode. Press the OK Button to take photo in Camera mode. Press the OK Button to play/pause current video on playback mode.
⏻	On / Off Power Button	Press and hold the Power Button to Power Off the Device. Press once to switch LCD Screen Off however DVR will continue recording.

## BUTTON FUNCTIONS AND INDICATORS CONT'

No.	Key	Instruction
	Micro SD Card Slot	Micro SD Card Slot. Please use a capacity of 32 to 128 GB, Class 10 and above SD Card.
	Mini USB Power Socket	Mini USB Power cable to connect with power adapter provided in the packaging.
	Microphone	Microphone position.
	Reset	Press to reset to factory settings.
11	Speaker	Speaker vent.
12	Lens	Camera lens.
13	Slot for Windscreen Mount	Slot to insert your 3M Windscreen Mount supplied in the box.
14	Rear Cam In	For plugging in your rear camera.
15	LCD Screen	LCD Display Screen
16	Recording Indicator LED	Indicator to show DVR is recording

### 4.0 GETTING STARTED

#### 4.1 INSERTING A MICRO SD CARD

With the Car DVR turned off and the screen facing towards you insert your Micro SD Card (not included) in the slot on the left side of the KPT-1022 with the text on the Micro SD card facing to you. Push the memory card in until a click is heard.

## 4.2 REMOVING A MICRO SD CARD

Ensure that the KPT-1022 is powered off, and with your thumbnail press in the Micro SD Card until a click is heard. The Micro SD Card will eject from the KPT-1022 when released.

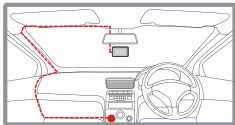
### NOTE:

- Micro SD Card is not included.
- Do not remove or insert the memory card while the Car DVR is turned on as this may damage the memory card or corrupt the memory cards stored data.
- Please use a Class 10 or higher rated micro SD card with a minimum capacity of 32GB and a maximum capacity of 128GB.
- Please format the Micro SD card before the initial use.
- When removing the memory card, be careful as the card may eject quickly.

## 4.3 INSTALLING THE KPT-1022

1. **OPTIONAL:** Remove the protective layer from the Electrostatic film (Provided) and place it on your windscreen. This helps to easily remove the 3M adhesive from your windscreen with out any adhesive residue.
2. Remove the protective stickers from the Car DVR and the 3M mount.
3. Press the mount base firmly against the windscreen and hold for 30 seconds.

4. Insert the power cable adapter onto the dash camera power socket. Then insert the rear camera in the CAM port on DVR.



**NOTE:**

- It is advised that the KPT-1022 is installed in the centre of the windscreen behind the rear view mirror.

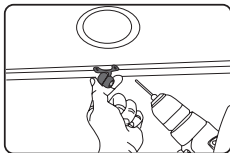
#### **4.4 INSTALLING THE REAR CAMERA**

##### **4.4.1 INSTALLATION GUIDE**

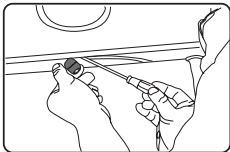
Select a flat and centred location near the number plate lamp at the rear of the vehicle to mount camera.

Attach tape to the bracket of the camera to hold the camera in position while installing, and drill two small holes, one for the first screw, the second to run the reverse camera cable through.

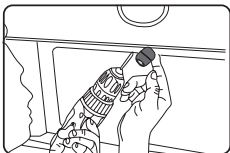
1. Select a flat and centred location near the number plate lamp at the rear of the vehicle to mount camera.
2. Attach tape to the bracket of the camera to hold the camera in position while installing, and drill two small holes, one for the first screw, the second to run the reverse camera cable through.



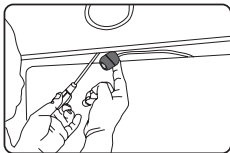
3. Use a screw driver to fix the first screw, leaving the screw loose enough to adjust the camera.



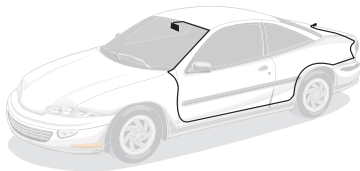
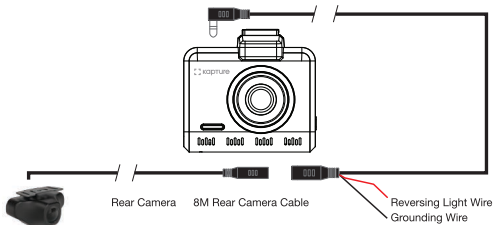
4. Insert the camera wire through the intended drilled hole checking the installation position.
5. Mark the position suitable for the second screw and drill a small hole for it.



6. Fix the second screw and securely tighten both screws.



#### 4.4.2 REAR CAMERA WIRING DIAGRAM



#### 4.4.3 REAR CAMERA FEATURES

After successfully installing and connecting the rear camera into the main DVR, the rear camera will be displayed on the Dash Cam's 2.4" IPS Screen.

Both Cameras will instantaneously start recording after DVR is powered ON.



Both Front and Rear Camera images will now be displayed on your Dash Camera's 2.4" Screen, you can switch between them by pressing the DOWN Key.

Display can switch between:

1. Full Front Camera view
2. Full Rear Camera view
3. Full Front with small window for Rear Camera
4. Full Rear Camera with small window for front

When your vehicle is in reverse gear, the display will change to the Rear Camera view with Reversing Grid Lines to assist the driver when reversing / parking.

## **5.0 CONNECTING TO POWER**

Only use the included charger to power and charge the Car DVR.

1. Once the Car DVR is securely installed on your vehicle's windscreen, plug the DC Power Plug into your vehicle's cigarette lighter.
2. Run the power cable along your vehicle's console and windscreen and plug the USB Micro plug into the Car DVR and the USB A end into the DC Power Plug.

**NOTES:**

- It is recommended that the Car DVR is installed behind your vehicle's rear view mirror.
- Make sure that the camera view is not obstructed by any window tint or any other objects.
- The KPT-1022 is designed to be constantly powered by the included DC Power Plug. The internal battery is designed to hold saved settings and power the camera when in Park Mode. The battery is NOT designed for primary use.

**6.0 LED INDICATOR**

- Flashing blue LED shows camera's internal battery is getting charged and is recording.
- Continuous blue shows it is charging but not recording.

**7.0 POWERING THE KPT-1022 ON/OFF****7.1 AUTO POWER ON/OFF**

When the Car DVR is correctly installed and connected to your vehicle's 12/24v power supply, the Car DVR will automatically power up and start recording when the vehicle accessories are activated.

**7.2 MANUAL POWER ON**

Hold the Power button on the lower right hand side of the camera until the Kapture start up screen appears.

**7.3 MANUAL POWER OFF**

Press the Power button on the lower right hand side of the car DVR. After powering down the device please wait for 10 seconds before turning the Car DVR back on.

## **7.4 RESET THE CAR DVR**

If the Car DVR does not function normally, try restarting the car DVR. To restart the car DVR, using a small pin press and hold the Reset button on the bottom side of the camera.

## **8.0 INITIAL SETTINGS**

Before using the Car DVR we recommend Formatting the Inserted Micro SD Card and setting the correct Time and Date.

### **8.1 FORMATTING THE INSERTED MICRO SD CARD**

Formatting the Micro SD card will delete all information on the inserted Micro SD Card and prepare the card for use with the Car DVR.

1. Press the Menu Button to enter the Settings/Setup Menu.
2. Use the Up and Down Keys to navigate the Settings Menu and highlight the Format SD Card setting and press the OK to select.
3. Press Up and Down Keys to select confirm.
4. Press the OK button to start formatting.

Quick Format (Default), you can switch quick formatting to change to full formatting in the Setting Menu.

#### **NOTES:**

- Menus cannot be accessed while the camera is recording. Please stop the recording before attempting to access the menu.
- Formatting your Micro SD Card will delete all files from the card. Once these files have been deleted you will not be able to recover them.

## **8.2 SETTING THE TIME AND DATE**

Setting the Time and Date allows you to stamp your footage with the time as a reference.

1. Press the Menu Button to enter the Settings/Setup Menu.
2. Press the UP and Down Key to select Date/Time.
3. Press the OK Key to enter into Date/Time setting.
4. Press the Up/Down to change the date time and press OK to move to next digit.
5. Press OK to confirm the Setting and return to previous menu.

## **9.0 REAL TIME ROAD ALERTS**

Your Dash Camera comes with the added feature of providing real time road safety alerts. The alerts will be displayed on the LCD Screen showing your actual live speed, speed limit (if applicable) and distance to the alert.

These alerts can be individually disabled from the settings menu.

### **9.1 SPEED CAMERA ALERT**

Will alert you of Speed and Red light cameras at your designated distance. The alert will show the speed limit with you current speed and a count down of the distance.

### **9.2 BLACKSPOT ALERT**

Blackspot alerts you before a high accident zone.

### 9.3 SCHOOL ZONE ALERT

School Zone alerts you before school zone.

### 9.4 RAILWAY CROSSING ALERT

Railway Crossing alert gives you the alert before the railway crossing.

**NOTE:**

- Distance of alerts to start can be selected from the Setting Menu. Distance can be set to 100M, 200M, 300M, 400M and 500M.
- **Here Maps does not support School Zone & Accident Blackspot Alerts for New Zealand.**

## 10.0 INTERFACE

### 10.1 VIDEO MODE



1. **Video Mode:** Number 3 shows the loop recording duration.
2. **Duration:** 00:00:01 Loop Recording timer.
3. **GPS:** GPS Signal Indicator.
4. **G-Sensor:** The highlighted bar indicated the sensitivity of G-Sensor with 1 Bar indicates Low Sensitivity.
5. **Park Mode:** The highlighted bar indicates the sensitivity of Park mode with 1 Bar indicates Low Sensitivity.
6. **WiFi:** Displays Wifi connectivity
7. **Microphone:** Turns on or off the Microphone.
8. **Micro SD Card:** Indicates inserted SD Card.
9. **Battery:** Indicates battery level.
10. **Speed:** Displays current speed.
11. **Date:** (01/01/2019)
12. **Time:** (00:00:01)

## 11.0 PLAYBACK VIDEO

1. If the driving recorder is doing camera shooting, press OK key first to stop camera shooting.
2. Long press **M** Menu key to switch to playback mode.
3. Short press **▲** or **▼** key to page up or down to select files.
4. Short press OK key to play selected video files; short press it again to pause.
5. Press **M** Menu key to delete a file.
6. Long press mode key to exit out of playback mode.

## 11.1 SETUP MENU

1. Press **OK** to stop Recording.
2. Press the **M** Menu button to enter into the Settings Menu.
3. Press the **▲** and **▼** Button to select the setting you wish to change.
4. Press **OK** Button on your selected option.
5. New Setting will be shown on the top left of the screen and also on the selected setting icon.

Menu	Select Settings	Description
Resolution	1080P FHD 720P FHD	Higher resolution gives your footage more detail but uses more storage space. Lower resolution saves storage space. <b>Default: 1080P</b>
Loop Recording	Off / 1, 3 or 5 Minutes	Loop Recording defines the length of time the KPT-1022 records before creating a new file. Using the Off setting will record the longest possible loops under the file size of 1 GB (around 5 minutes). <b>Default: 3 Mins</b>

## SETUP MENU CONT'

Menu	Select Settings	Description
Microphone	Off / On	Turning this setting off mutes the built in microphone. <b>Default: On</b>
Exposure	0 / 0.3 / 0.7 / 1 / 1.3 / 1.7 / 2 EV	Changes the exposure value of recording footage. <b>Default: 0</b>
G-Sensor	Off / Low / Medium / High	To adjust the sensitivity of the G-sensor. High is the highest sensitivity and Low is the lowest. <b>Default: Low</b>
Park Mode	Off / On	Park Mode helps to make your car safe by recording the video even when the Engine is switched off. Your DVR will record the incidents when ever it detects an impact and the G-Sensor is triggered. Park Mode will record a maximum of 10 instances during a 24 hour period, once the battery has been fully charged. <b>Default: Off</b>
Language	Select Language	Select Menu Language. <b>Default: English</b>
Volume	Off / Low / Medium / High	Controls the volume of Inbuilt speaker. <b>Default: Medium</b>
Auto LCD Off	Off / 1 min / 3 mins / 5 mins	Auto Screen Saver setting determines the amount of time before the display screen turns off. (KPT-1022 will keep on recording even the display is Off). <b>Default : Off</b>



## SETUP MENU CONT'

Menu	Select Settings	Description
ADAS	Off / On	LDWS gives lane departure warning. <b>Default: Off</b>
Display Mode	Front CAM Rear CAM PIP A: Front cam with Rear Cam IN PIP B: Rear Cam with Front CAM IN	Changes the video display mode options for the Dash Camera. Front Camera, Rear Camera, Picture in Picture mode. <b>Default: PIP A</b>
Date/Time	Set Date and Time	Using the Up/Down and OK buttons to enter the date and time (24hr clock) to stamp onto your footage. Once you have finished use the OK button to save and return to the Settings Menu.
Date Format	Off / On	To select the format Date stamped. <b>Default: DD MM YYYY</b>
GPS Stamp	Off / On	Stamps a watermark of your GPS coordinates and speed. <b>Default: On</b>
Satellite Status	N/A	Show the GPS satellite signal strength.
Speed Unit	KM/H or MPH	Select a Speed Unit for GPS watermark. <b>Default: KM/H</b>
Keypad Sound	Off / On	Mutes control for Key beeps. <b>Default: On</b>
WIFI Mode	Off / On	Turns on or off the inbuilt WIFI. <b>Default: On</b>

## SETUP MENU CONT'

Menu	Select Settings	Description
License Plate	Input License Plate Numbers	Input your car license plate and it will be watermarked over the recorded footage.
Format SD Card Warning	Off / 15 / 30 / 60 Days	Sets a reminder to format your SD Card in case of excess locked footage files. <b>Default: 30 Days</b>
Storage	N/A	Displays current memory capacity on SD Card.
Format SD Card	Cancel / OK	Format the inserted Micro SD Card, deleting all photos, videos and data.
Default Setting	Cancel / OK	Restore factory settings
Version	OK	Displays the installed firmware version and WIFI Name and Password.
Distance of Alert	100, 200, 300, 400, 500 metres	Select the notification distance of Speed Alerts. <b>Default: 400</b>
Alert Type	Display or Audio & Display Alert for speed alerts	Select the alert type. <b>Default: Audio &amp; Video</b>
Speed Camera Alert	Off / On	Turns off or on Speed Camera Alerts. <b>Default: On</b>
Red Light Camera Alert	Off / On	Turns off or on Red Light Camera Alerts. <b>Default: On</b>
Black Spot Alert	Off / On	Turns off or on Black Spot Alert. <b>Default: On</b>
School Zone Alert	Off / On	Turns off or on School Zone Alert. <b>Default: On</b>

## 12.0 SOFTWARE PLAYBACK



Your DVR with inbuilt GPS will record the GPS coordinates and the speed of your travel on the recorded footage.

To play back the GPS footage, Please download the player from [www.kapturecam.com.au/product/KPT-1022](http://www.kapturecam.com.au/product/KPT-1022) and run it on your windows player.

To view images from Dash Camera, you will need to remove the Micro SD Card and transfer the files to you computer using a Micro SD Card Slot or compatible USB adapter. If need check the GPS information, the professional player must be installed firstly.

Once files have been transferred to your computer, please select the folder and select the file you wish to view or playback.

### **13.0 INSTALLING APP ON SMART PHONE**

Please download the KPT-1022 App from the Google Play Store or Apple App Store depending on your mobile device.

After successfully downloading and installing the app on your mobile. Search for KPT-1022-XXXX (the last 4 digit are unique to each dash camera) WIFI connection and connect it on your mobile device by entering password "12345678".

Open the app and sync it with the DVR, this allow you to access your the app.

### **14.0 WARRANTY TERMS & CONDITIONS**

Our goods come with guarantees that cannot be excluded under the Australian Consumer Law. You are entitled to a replacement or refund for a major failure and for compensation for any other reasonably foreseeable loss or damage. You are also entitled to have the goods repaired or replaced if the goods fail to be of acceptable quality and the failure does not amount to a major failure.

This warranty is provided in addition to your rights under the Australian Consumer Law. Directed Electronics warrants that this product is free from defects in material and workmanship for a period of 12 months from the date of purchase or for the period stated on the packaging. This warranty is only valid where you have used the product in accordance with any recommendations or instructions provided by Directed Electronics.

This warranty excludes defects resulting from alterations of the product, accident, misuse, abuse or neglect. In order to claim the warranty, you must return the product to the retailer from which it was purchased or if that retailer is part of a National network, a store within that chain, along with satisfactory proof of purchase. The retailer will then return the goods to Directed Electronics.

Directed Electronics will repair, replace or refurbish the product at its discretion. The retailer will contact you when the product is ready for collection. All costs involved in claiming this warranty, including the cost of the retailer sending the product to Directed Electronics, will be borne by you.

**Directed Electronics Address:**

**44 Translink Drive, Keilor Park Victoria 3042**

**Ph: +61 03 8331 4800 | Email: [service@kapturecam.com.au](mailto:service@kapturecam.com.au)**







YOUR EYEWITNESS ON THE ROAD™



All Images, Information and Content are Copyright © 2019  
Directed Electronics Australia Pty Ltd. All Rights Reserved.  
[www.kapturecam.com.au](http://www.kapturecam.com.au) | [www.kapturecam.co.nz](http://www.kapturecam.co.nz)

**DIRECTED**  
AUSTRALIA & NZ

[www.directed.com.au](http://www.directed.com.au)  
[www.directed.co.nz](http://www.directed.co.nz)